



GAT MONTHLY MEMBERSHIP PROGRESS REPORT

Results as of: 6/30/2021

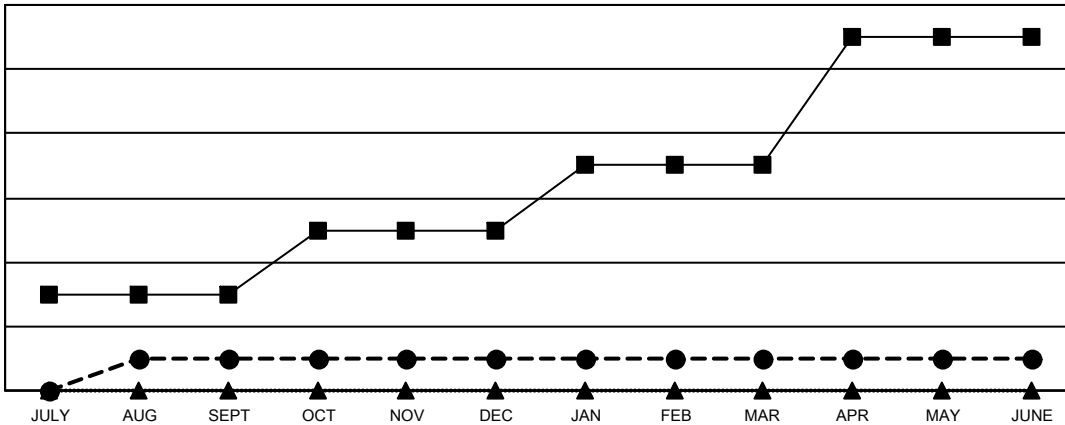
Multiple District 25

LOCATION: INDIANA

| Clubs | | | |
|-----------------------|---------------|-----------|---------------|
| RESULTS FOR 2020-2021 | | | |
| QUARTER | NEW CLUB GOAL | NEW CLUBS | DROPPED CLUBS |
| JULY/AUG/SEPT | 3 | 1 | 2 |
| OCT/NOV/DEC | 2 | 0 | 1 |
| JAN/FEB/MAR | 2 | 0 | 7 |
| APR/MAY/JUNE | 4 | 0 | 3 |

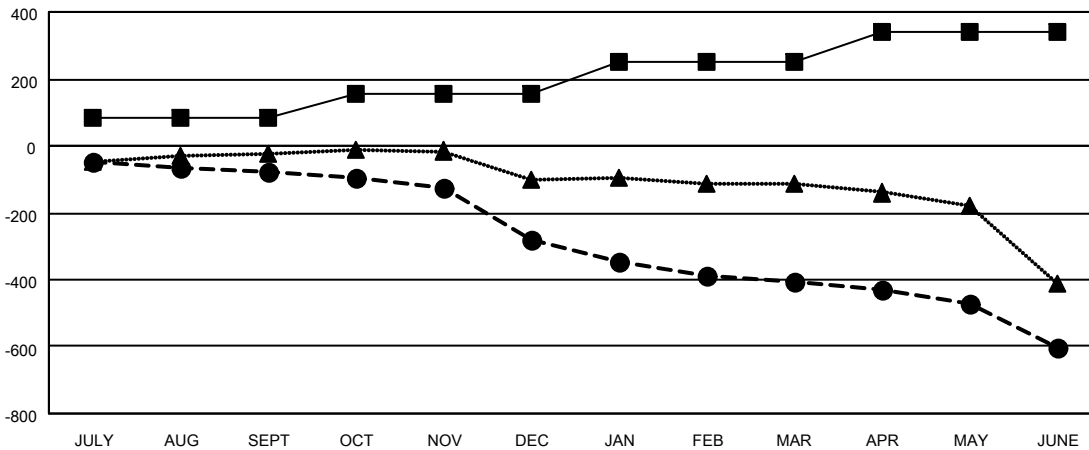
| Members | | | |
|-----------------------|------------------------|----------------------|--|
| RESULTS FOR 2020-2021 | | | |
| QUARTER | MEMBER GROWTH NET GOAL | MEMBER GROWTH ACTUAL | DROPPED MEMBERS ACTUAL (including transfers) |
| JULY/AUG/SEPT | 81 | 165 | 221 |
| OCT/NOV/DEC | 76 | 139 | 317 |
| JAN/FEB/MAR | 93 | 125 | 209 |
| APR/MAY/JUNE | 88 | 228 | 378 |

GOALS AND ACTUAL NEW CLUBS CUMULATIVE



- - CURRENT YEAR GOALS FOR NEW CLUBS
- - CURRENT YEAR ACTUAL NEW CLUBS
- ▲ - LAST YEAR ACTUAL NEW CLUBS

GOALS AND ACTUAL MEMBERS CUMULATIVE



- - MEMBER GROWTH NET GOAL
- - MEMBER GROWTH ACTUAL
- ▲ - LAST YEAR MEMBERSHIP ACTUAL

| | |
|------------------------|--------------|
| DROPPED CLUBS: 13 | |
| <u>DROPPED MEMBERS</u> | |
| DECEASED | 220 |
| CLUB CANCELLED | 40 |
| OTHER | 865 |
| TOTAL | 1,125 |

168 CLUBS OF 367 ADDED 1 OR MORE NEW MEMBERS

| <u>GENDER DISTRIBUTION</u> | |
|----------------------------|----------------|
| MALE | 6,100 (69.73%) |
| FEMALE | 2,648 (30.27%) |

[CLICK HERE FOR CUMULATIVE MEMBERSHIP DATA](#)

| | |
|---------------------------------|-------|
| TOTAL FAMILY UNIT MEMBERS | 2,091 |
| FAMILY MEMBERS PAYING HALF DUES | 1,068 |